

# Balanced daylight, measured.

Objective spectrum and colour data for the HD Light Engine.

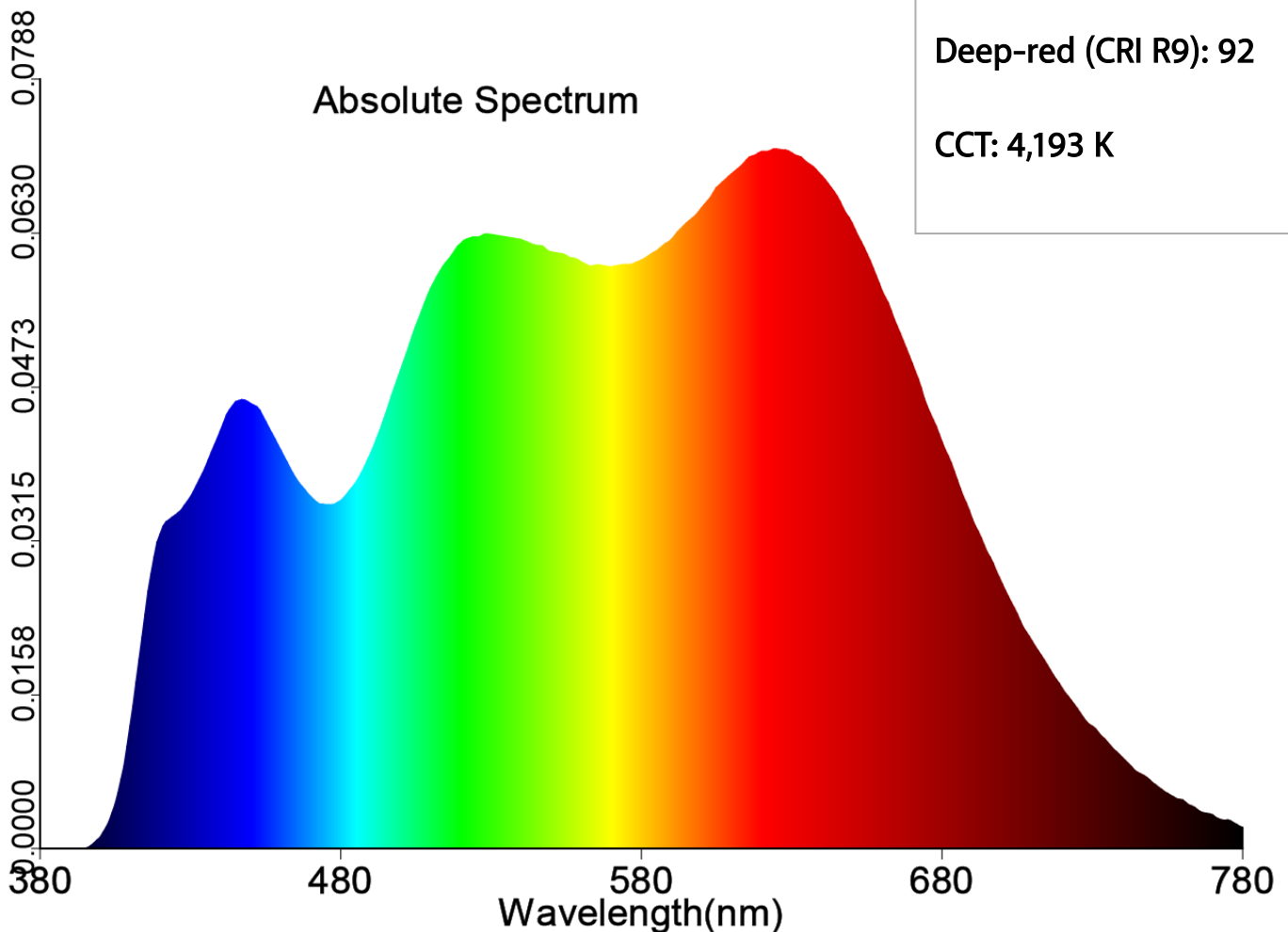
## Key Results

TM-30 Fidelity (Rf): 98

TM-30 Gamut (Rg): 101

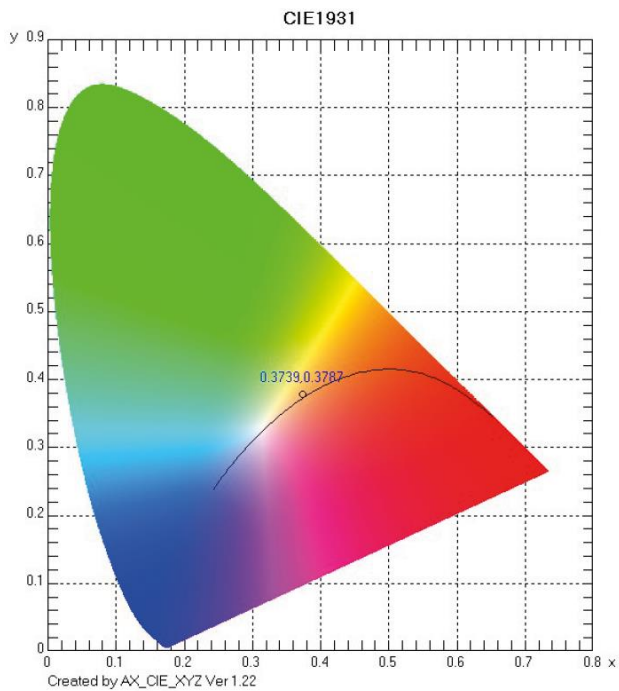
Deep-red (CRI R9): 92

CCT: 4,193 K



**What this graph shows:** The mix of colours in the light.

**What this means for you:** It isn't a blue-heavy light. It has a smooth spread with plenty of red, so glare is lower and black print looks properly black against white paper.

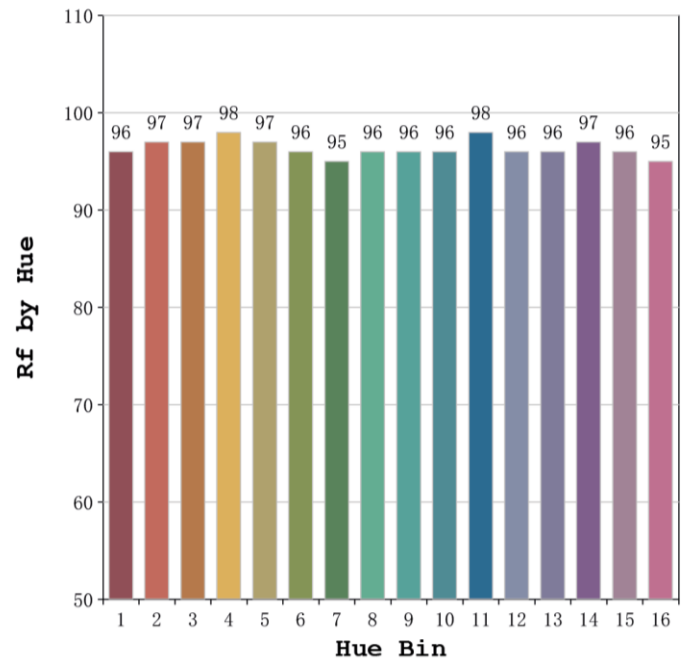


**What this graph shows:**

Where the white sits versus neutral daylight.

**What it means for you:**

Whites look white. No green or pink tint.

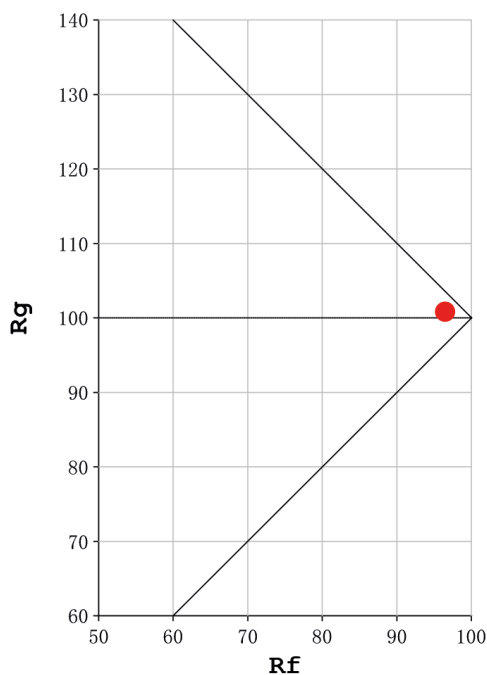


**What this graph shows:**

Colour accuracy across all colour families.

**What it means for you:**

Reds, greens, blues and skin tones look right.

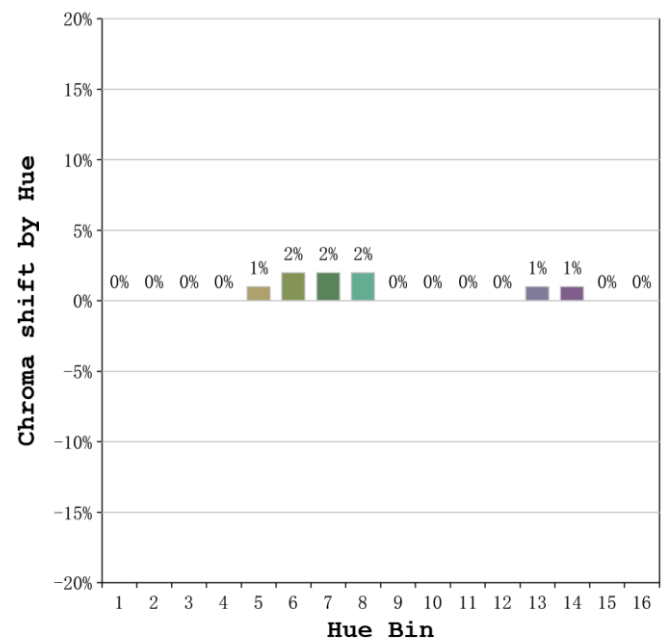


**What this graph shows:**

Overall accuracy and saturation together.

**What it means for you:**

Colours look true to life, not washed out.



**What this graph shows:**

Whether any colour is boosted or dulled.

**What it means for you:**

No colour bias. Greys stay grey; fine lines stay clean.